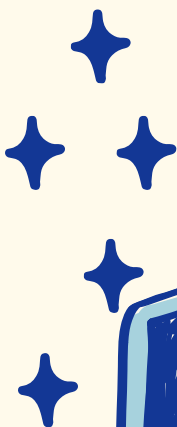
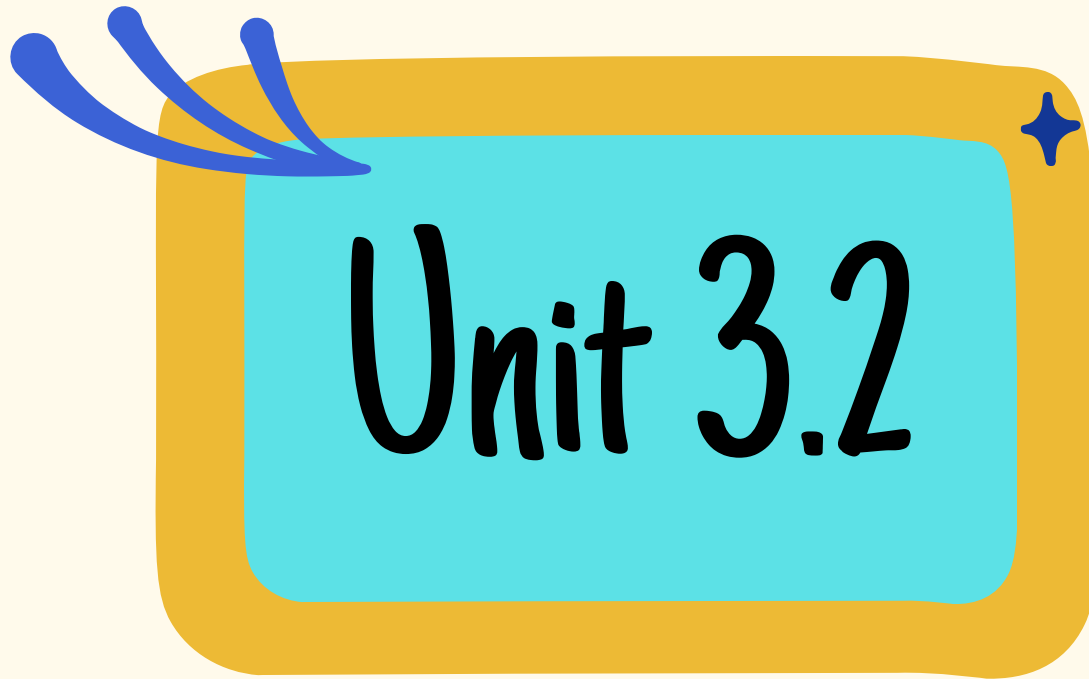


# English A2.1



A yellow-bordered box with a light blue interior. It features three blue swooshes on the top left and a small blue star on the top right.

# Unit 3.2



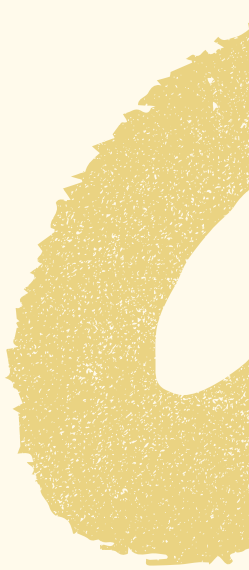
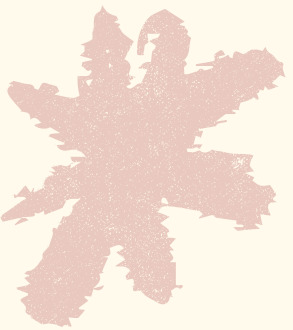
# GRAMMAR SECTION

## -Ability expressions

- Can and could
- Have to
- Must
- To be able to

# LEARNING OUTCOMES

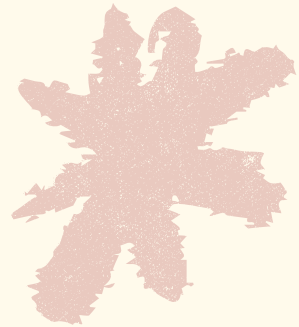
A2 level students will gain a comprehensive understanding of expressing ability in English, enabling them to use these expressions accurately to talk about their skills, capabilities, and obligations. They will be able to communicate their abilities and limitations effectively, express necessity and obligation, and discuss their competence in various activities and tasks.





# VOCABULARY

- Ability
- Obligation
- Possibility



# PRONUNCIATION

Sound & spelling

*A dog in the corner /ɒ/ and /ɔ:/*

