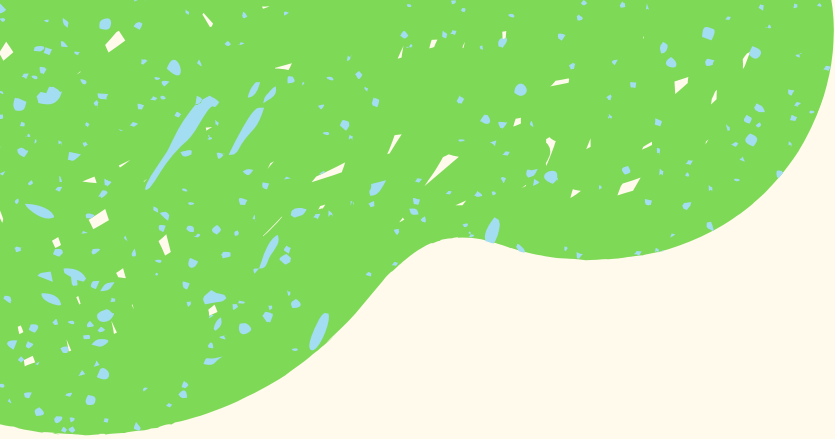




Reading: A message
to a friend



Read the messages and answer the questions

Message from Ericka:
Hey, Noelle! I'm travelling to New York right now. My friend Ashley and I are taking the train to Grand Central Station – near your office. What time do you have lunch? Are there any good restaurants near your office? Let's have lunch together!



Message from Noelle:
Wow, you're coming to New York! I'm at work right now, but I usually have lunch around 1 o'clock. There is a great pizza place down the street from my office and a Chinese restaurant on the other side of the street.

Message from Ericka:

One o'clock is great. Let's meet at your office and eat at the Chinese restaurant – I had pizza last night. Our hotel is in the Financial District. Where is that? And how do we get there from your office? After lunch, Ashley and I are going to the hotel.



Message from Noelle:

The Financial District is in the centre. You can get there on the underground. Take the 4 or 5 train from Grand Central to the Fulton Street station. Or you can take a taxi. It's about \$15.

Answer the following questions

- What does Erika ask about?
- Where are Erika and Ashley?
- What is Noelle doing?
- *There are two good restaurants near Noelle's office.* Is this sentence true or false?

Complete the sentences

_____ is in the Financial District. Noelle works near _____. _____ is on the other side of the street from Noelle's office, and _____ is down the street.



How can they get from Noelle's office to the Financial District?